

Volume 33, Issue 5

May 2025

A publication of
Grace Lutheran Church
3000 W Golf Course Rd.
Midland, TX 79701

Herald of Grace

**DON'T
GO**

TO CHURCH.

BE THE CHURCH.

Transitional Updates . . .

We are in the midst of our “Spiritual DNA Workshops” (April 26/May 3) where we’ve looked the various “mission” statements of the New Testament. From the Scriptures, participants propose the following MISSION statement:

Go. Love. Christ.

The understanding of our MISSION as Christian Church is that we are called to GO into our community and world; LOVE God and, as His people, love others; sharing the Gospel of CHRIST with people with our words and by our deeds.

Understanding our MISSION, we turned our attention to stating our VISION - that is, “how” we accomplish the MISSION as Grace Lutheran Church in Midland, TX. The VISION has been what we’ve previously referred to as our “mission” -

✦ Sharing God’s Grace

✦ Living His Word

✦ Making Disciples

At our May 3rd workshop (yet to be held at the time I’m writing this), we will be working on translating the VISION into a series of VALUE statements that will prioritize our efforts and focus our mission and ministry as a congregation.

A **Transitional Task Force** has been formed and has begun working on putting together the various forms and compiling the requested data for the District Office to use as they help prepare a list of pastoral candidates for the congregation’s consideration. Please keep this task force in your prayers as they work on behalf of the Grace congregation!

Thoughts from Ms. Carol



Dear Family of Grace,

It's time to register for VBS!

This Summer, our VBS will be going on an EPIC Australian Adventure! Our God gives us so many epic things to discover! Amazing animals. Stunning sea life. Wondrous wilderness. Our God has given us so much to see and explore! But of all the gifts God has given to us, the most marvelous is His Son, our Savior, Jesus. At Epic Australian Adventure VBS, kids will explore 3 inspiring Bible Stories that reveal how Jesus leads, teaches and sends us.



Each VBS session starts with the Opening, where children gather with their Team Leader and other kids in their Teams. They sing, hear God's Word, pray, watch a puppet skit, and learn the day's Take-Home Point. After the opening, Teams head off to six rotation sites: Bible Exploration, Crafts, Games, Snacks, Bible Stories and Science! Afterward, everyone gathers for the Closing to sing more songs, hear about the Mission Project, review the Bible account and Bible Memory Verse and pray. Save these dates now – **July 21, 22, 23** and let your children be part of the EPIC Australian Adventure! Scan the QR Code below to register by June 15th.

Blessings,

Ms. Carol



Ascension Day Service

Ascension Day is the most overlooked church festival day. **Thursday, May 29th** is Ascension Day. We will have a service at 7:00 pm. The Ascension of our Lord is vitally important to our current and future plans as God's children. See you in church!



A MATTER OF
FAITH

Confirmation Weekend

Kiernan Cate Baker
Cadence Nicole Hall
Jacob Michael Jones
Jenna Lee Powell
Alivia Grace Schumacher
Steve "Wade" Stansell

Will reaffirm their Baptism through
the Rite of Confirmation.

Questioning will be on
Saturday, May 17th at

5:00 pm in the sanctuary with
reception following
in the Fellowship Hall

Rite of Confirmation is in the sanctuary
at **10:30am** on Sunday, May 18th.



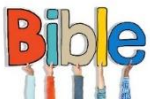
Upcoming Important Dates:

May 7 & 8	Puppet Chapel
May 5 - 10	Teacher Appreciation Week
May 14 - 15	Spring Praise Chapel Program & 4's/Kinder Graduation 10:00 in the Sanctuary
May 19 & 20	Early Release @ 11:00am Join us for an end of year picnic On the playground

We still have some openings for students for the 2025 - 2026 school year!

We also NEED SUBS!

For class availability or to inquire about subbing at the ECP,
please call Amy or Micah at 432-694-3063!



May 5 – 9	Ascension You will be My witnesses. Acts 1:8 GROW as a witness!
May 12-16	Dorcas and Lydia Serve wholeheartedly Ephesians 6:7 GROW while serving!
May 19 – 20	Grow in Grace Grow in the grace & knowledge of Jesus Christ 2 Peter 3:18 GROW in GRACE!

What's Going On At Grace



Voters' Assembly is on
the calendar for
Sunday, May 4th after
divine service.

We will honor our 2025 high school &
college graduates at this meeting.



High School

*Eli Hale
Kyndall Jones
Cutter Lange
Michael Perry
Tyler Powell
Kate Stansell*

College

*Jonathan McCann
Associate's degree*

May 11th is Mother's Day.

Today, more than ever before, take a moment to call or
send out a special wish and a prayer. Whether it's your
mom, grandmother, aunt, friend, or whoever fills this
special role in your life.



Midweek Ministry

Bible Bunch through K – 2nd Sharon Burks, Carol Massie
Faith Formation 3rd – 4th Stacy Baker, Lisa Dalager
Pre-Confirmation 5th-6th Lauren Schwalbach, Jodie Hawkins
2nd Year Confirmation, 8th Grade – Parlor – Pastor Ramey
Youth (Financial Peace), High School – Ryan Hamilton
Adult Bible Study, All Ages – Library



Our last Midweek Wednesday this year is May 14th



Wednesday Meals for May

Join us for the Wednesday Meals. There's always great food and fellowship. Meals start at **5:00pm** and end at **6:00pm**. Show your appreciation with a free-will offering to help cover the expenses. All meals include drinks, salad & desserts.

May 07 **Taco Salad**
May 14 **Luby's Night Surprise**

Please make sure to sign up for dinner *each week* on the **PINK SHEET** so we can prepare enough food for everyone.

2025 FLOWER CHART



Thank you EVERYONE for helping to fill the **2025 Flower Chart**. There are still a few open dates. It is located on the Grace bulletin board in the east hallway, across from the Community Room. **The flowers are still \$50/vase**. Please fill out an envelope, place payment inside and turn it in either in the **offering plate** or on **Victoria's desk** no later than Monday preceding your flower date to get the dedication in the Worship Folder on the day your flowers are on the altar.

Make checks payable to Grace Altar Guild. Please note there is a new place to check on the envelope at the bottom if you would like to pick your flowers up by Tuesday morning.



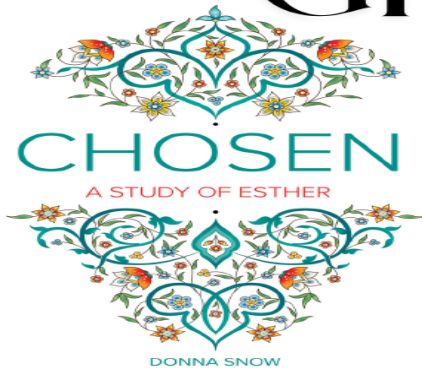
The national blood supply is always dangerously low.
That means Midland's is too!

Please mark your calendars TODAY
for our next Blood Drive!

July 30th from 4:00 – 7:15pm.

Watch the PINK SHEET so you can sign up to get your preferred time or call the Church office.

Women of GRACE

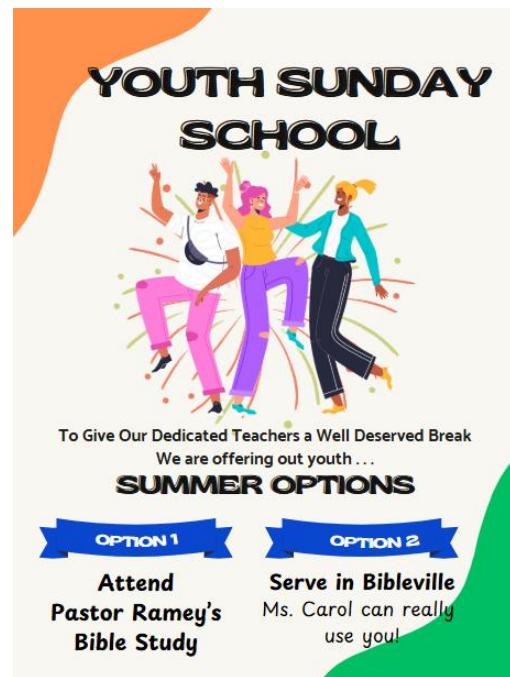
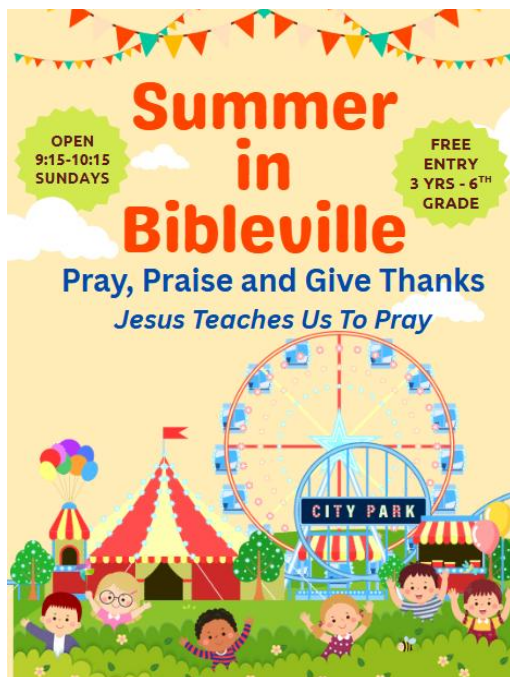


NEW!
Women's Conference will
be held on May 16th from
6-8pm & May 17th from
9am -12pm.

We will have games, give
aways, fellowship and
time for growing
together in Scripture.
More information to
come!

Our content will be based on the Chosen Bible Study
by Donna Snow.

Contact Gwen McWhorter at
903-641-1966, if you have any
questions.



Sunday's Divine Service – 10:30 am

If you are not able to be in the Lord's house on Sunday, you may request a CD and DVD copy of the divine service from Victoria in the Church Office. You may also listen to the previous Sunday's divine service via our website, www.gracelutheranmidland.org. It is usually uploaded on the following Monday.



The Columbarium is fully functional and there are several niches available. Engravings are also available. Engravings have been done on the niches occupied. If you would like to purchase a niche in the Columbarium, please see Victoria in the Church office for the forms.



A Servant is Still Needed for May 2025

A teller assists Jim Raven (Grace's Financial Secretary), in counting the tithes collected after Sunday service. It normally takes about one hour.

No prior training is needed.

Jim will show you on the spot how to help, and your presence serves as an important "control" in ensuring more than one person is present while tithes are counted.

Tellers are still needed for 2025!

Please sign up on the PINK SHEET

In your weekly worship bulletin.

Check your calendars & prayerfully consider when you can serve.

Grace Quilters News



Grace Quilters are excited to present this month's quilt display of our latest creations! The quilts will hang in the east hallway near the Community Room from May 11- 25, with pricing at \$65 for full size and \$45 for lap size. We continue to meet in the Community Room on **Thursdays from 1:00 to 3:00 p.m.**, with the exception of holidays. We invite you to join us for fun and fellowship, and of course to create some beautiful quilts! Contact

Gina Zimmerman (432-553-2263) or Margaret Cloyd (432-638-3358) for more information or questions. No experience necessary!

Grace Lutheran Church is excited to partner with ROPE Youth for the third year in a row for a service project during the first week of June. This collaboration gives our church the opportunity to serve food-insecure families during the summer months—a time when many children lose access to regular school meals. Throughout the week, volunteers will be working at various locations, preparing, cooking, and handing out meals to families in need. We need 5-6 volunteers each night. **SIGN UP ON THE PINK SHEET!**



The prayer focus for May is the Early Childhood Program

Sandra Parsley - Chair
Lenae Beran, Larissa Keller,
Jason Hawkins, & Kelli Jones



G.R.A.C.E. Connections

Stay connected to the Word and your family at Grace!

We currently have 2 active Connection Groups at Grace.

Growing in Grace Meets Wednesday during Midweek Ministry hour in the library.

Men's Breakfast Connection Leader is Ryan Hamilton. Meets the 1st & 3rd Wednesdays at Black Rifle Coffee on Big Spring from 6:45am – 7:30am. Topics will vary.

G.R.A.C.E. Connections are the Grace congregation in mission. They are groups of 4 to 12 people who come together and are intentionally led in the mission statement of our congregation:

† **Sharing God's Grace**

† **Living His Word**

† **Making Disciples**

The Core Values of G.R.A.C.E. Connections are:

- **Growing**...by reaching out, *witnessing*, and forming new groups
 - **Relating**...and *connecting* with each other as the body of Christ
 - **Acting**...in Christian *service* and mission
 - **Caring**...and *praying* for each other and the world
 - **Enriching**...personal growth and spiritual transformation through *Bible study*
- Satan seeks to divide to destroy. Stay CONNECTED. Be CONNECTED.
Be a part of a G.R.A.C.E. Connection!

Our 2025 Sunday School Offering will go to Rays of Hope.

Check the display in the Social Hall by the Coffee Machine to see how we're doing throughout the year and don't forget your Sunday School Offering each Sunday!



Birthdays & Anniversaries



Birthdays

Erin Heard	05/01
Cady Hall	05/04
Adam Hobratchk	05/04
Teresa Clingman-DeShaw	05/06
Karsen Mitchell	05/08
Toni Granat	05/09
Rowan Sparks	05/09
Hawley Moore	05/12
Margie Norton	05/13
Brent Schaekel	05/13
Rachel Pelletier	05/16
Bryson Powell	05/17
Stephen Boyles	05/19
Claudia Chaney	05/23
Lea Keese	05/23
Chris Stansell	05/23
Betty Barnes	05/24
Brandon Pokky	05/24
Jessica Diaz	05/29
Jamie Moerbe	05/30
Blake Dalager	05/31
Elizabeth Grabow	05/31



Baptismal Birthdays

Fred Norton	05/08
Lauren Schwalbach	05/09
Virginia DeBerry	05/09
Adalynn Hayden	05/10
Erin Heard	05/10
Harper Diaz	05/11
Eli Hale	05/13
James Powell	05/13
Gina Zimmerman	05/14
Denise Schumacher	05/15
Pat Lufholm	05/26
Stefan Parsley	05/27
Kelli Baumann	05/27



Anniversaries

Dennis & Caren Stephens 45 yrs.	05/17
James & Judy Roberts 38 yrs.	05/23
Mac & Melanie Hall 16 yrs.	05/23



EASTER SONrise Breakfast



Blessed



CHATTER

TEXAS DISTRICT CEF NEWSLETTER

1221 Satellite View, Round Rock, TX 78665
512.646.1233 • 1.888.951.1233 • TexasCEF.org



April 2025

Congratulations!

90
LOAN
REBATE
CHECKS
OVER \$590,000
IN 2024

This past February, Texas CEF was blessed to give back to ministry over \$590,000 through our Incentive Rebate Plan. This incredible contribution reflects the ongoing support and partnership we've built with congregations across the state. The following list (on page two) showcases the congregations that have received a loan rebate for the 2024 fiscal year.

But as we look to the future, we're even more excited to expand and enhance this program. Our goal is to celebrate and strengthen our relationships with congregations in an even more impactful way. Be on the lookout for details on these upcoming enhancements, coming soon!

Did your congregation receive a loan rebate check? Let us know how you celebrated!



Follow us on Facebook - facebook.com/texasdistrictcef



Follow us on Instagram - [@texasdistrictcef](https://instagram.com/texasdistrictcef)

Trust in the Lord with all your heart, and do not lean on your own understanding. In all your ways acknowledge him, and he will make straight your paths. ~ Proverbs 3:5-6

Arlington, Beautiful Savior
 Austin, Mt. Olive
 Austin, Redeemer
 Austin, Redeeming Grace
 Azle, Good Shepherd
 Baytown, Redeemer
 Beaumont, St. John
 Boerne, Messiah
 Borger, Good Shepherd
 Bryan, Bethel
 Canton, Holy Cross
 Cibolo, Word of Life
 College Station, Holy Cross
 Commerce, Trinity
 Cypress, Lifebridge
 Cypress, St. John
 Dallas, Our Redeemer
 Dallas, St. Paul
 Dallas, Zion
 DeSoto, Cross of Christ
 Flower Mound, Lamb of God
 Fort Worth, Christ
 Friendswood, Hope
 Frisco, Waters Edge
 Gatesville, St. Paul
 Georgetown, Faith
 Georgetown, Zion
 Granbury, Our Savior
 Gun Barrel City, St. Peter
 Harker Heights, Fortress

Harlingen, St. Paul
 Haslet, Holy Shepherd
 Houston, Beautiful Savior
 Houston, Christ Memorial
 Houston, Epiphany
 Houston, Family of Faith
 Houston, Gloria Dei
 Houston, Living Water
 Houston, San Pedro
 Houston, St. Mark
 Houston, St. Andrew
 Houston, Trinity
 Humble, Lamb of God
 Huntsville, Faith
 Hurst, Peace
 Katy, Crossroads
 Katy, Memorial
 Keller, Messiah
 Kerrville, Hosanna
 Kilgore, Pilgrim
 Killeen, Grace
 Kyle, St. John
 La Grange, LOMT
 La Porte, Christ
 Lake Jackson, St. Mark
 Lakeway, ACTS
 Lubbock, Hope
 Mansfield, St. John
 Marble Falls, Hope
 McAllen, St. Paul

Midland, Grace
 Midland, Holy Cross
 New Braunfels, Cross
 Newark, Victory in Christ
 Northlake, St. Peter
 Odessa, Redeemer
 Orange, Grace
 Pflugerville, Point of Grace
 Plainview, St. Paul
 Plano, Faith
 Plano, Messiah
 Rockwall, Our Savior
 San Antonio, Mt. Olive
 San Antonio, Mt. Calvary
 San Antonio, Redeemer
 San Antonio, Shepherd of the Hills
 San Antonio, St. Paul
 Smithville, Grace
 Spring, Trinity
 Stephenville, Faith
 Sugar Land, Faith
 Sugar Land, Fishers of Men
 Taylor, Trinity
 The Woodlands, Living Word
 Thorndale, St. Paul
 Tomball, Salem
 Tomball, Zion
 Vernon, Zion
 Waco, Peace
 Weatherford, Trinity

APRIL INTEREST RATES

FIXED RATE

One Year Note	4.250% (4.32% APY)
Three Year Note	4.000% (4.06% APY)
Five Year Note	3.750% (3.80% APY)
Jumbo Investment*	4.350% (4.42% APY)

*\$100,000 minimum, 18 month term

CONGREGATIONS

Savings	1.250% (1.26% APY)
Building Fund	3.500% (3.56% APY)

FLOATING RATE

One Year Note	3.000% (3.03% APY)
Three Year Note	3.250% (3.29% APY)
Five Year Note	3.500% (3.55% APY)
Flex Savings	1.000% (1.00% APY)
Rainy Day Fund**	1.250% (1.26% APY)

**Amounts over \$10,000 receive the Flex Savings rate



All individual Texas District CEF investments (PLEX, fixed and floating rate notes) may be included in a person's IRA portfolio, through our custodian GoldStar Trust Company. www.texascef.org/ira.html (1) Subject to penalty for early withdrawal. (2) Rates subject to change. Rates reviewed monthly. Texas District Church Extension Fund is a nonprofit religious organization; therefore, CEF investments are not SIPC or FDIC-insured bank deposit accounts. This does not constitute an offer to sell or a request to buy. The offer is made solely by CEF's Offering Circular.



Through investments from Texas District LCMS congregations and their members, Church Extension Fund will be the preferred financial resources partner for district ministries focused on multiplying followers of Jesus.

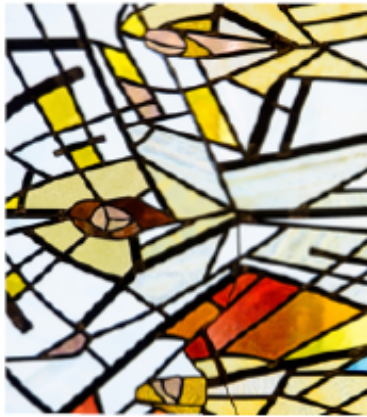
Texas District Church Extension Fund
 1221 Satellite View, Round Rock, TX 78665
 512.646.1233 • 1.888.951.1233 • TexasCEF.org

May 2025

Sunday	Monday	Tuesday	Wednesday	Thursday	Friday	Saturday
Elders Josh Jones Brent Keesee Elders Mike Hall Todd Byers Jim Harren Dennis Wiesmeyer	Altar Guild Pat Lufholm Elanist Moritz Teller ?			1 1:00 Quilbers 7:00 Elders' Mtg	2 	3 9:00 Spiritual DNA Workshop Pt. 2
4 9-15 Sunday School 10:30 Divine Service w/Communion 11:00 SWAT & Youth To Rockhounds 11:45 Voters' Assembly	5 Teacher Appreciation Week	6 2:30 Mission Agape	7 6:45 Men's Breakfast Comm. 10:00 Puppet Chapel 10:30 Pastor's Bible Study 5:00 Meal – Taco Salad 6:00 Joyful Chorus 6:00 Midweek Ministry	8 10:00 Puppet Chapel 1:00 Quilbers 6:00 Bus. Admin. Board	9 HS Focal Point	10 May 9-11 Retreat Lake Leon
11 Mother's Day 9-15 Sunday School 10:30 Divine Service	12	13	14 Last Midweek Until August 10:00 Spring Praise Chapel 10:30 Pastor's Bible Study 5:00 Lady's Night Surprise 6:00 Joyful Chorus 6:00 Midweek Ministry	15 10:00 Spring Praise Chapel 1:00 Quilbers	16 9:00 Women's Conference 2:00 pm 	17 9:00 Women's Conference 5:00 Questions w/Confirmation Reception to Follow
18 Confirmation Sunday 9-15 Sunday School 10:30 Divine Service w/Communion Prayer Psl Cards Due TODAY	19 11:00 ECP Early Release & Picnic	20 11:00 ECP Early Release & Picnic 2:30 Mission Agape	21 6:45 Men's Breakfast Comm. 10:30 Pastor's Bible Study	22 1:00 Quilbers	23	24
25 9-15 Sunday School 10:30 Divine Service	26 Memorial Day Church Office Closed 	27	28 10:30 Pastor's Bible Study	29 Ascension Day 1:00 Quilbers 7:00 Ascension Service	30	31

Grace Lutheran Church

3000 West Golf Course Road Midland, Texas 79701 • 432.697.3221 • office@gracelutheranmidlandtx.org



MAY

THE LUTHERAN CHURCH—MISSOURI SYNOD

Pray For Us Calendar

LCMS MISSIONARIES ON HOME SERVICE — MAY 1-15

Every other year, The Lutheran Church—Missouri Synod's (LCMS) international missionaries spend approximately two months in the United States on "home service." During this time, they reconnect with the individuals, congregations and groups who support their mission work. Home service also gives them a period of rest and renewal and the chance to spend time with their families.

Remember God's work through missionaries on home service as you pray:

- 1.** for the LCMS missionary families who will be on home service. Ask the Lord to keep them safe during their travels.
- 2.** for God's hand to guide and bless the details and logistical arrangements that are a necessary part of missionary home service, such as transportation and housing.
- 3.** for missionary families to be able to visit as many congregations and other groups as possible, while managing their limited time in the United States.

welcome missionaries into their churches for mission presentations, Sunday school, children's messages, celebration luncheons, Bible studies and other activities.

- 8.** that congregations and other groups would experience a revitalized interest in praying for missionaries and supporting their work, especially after visiting with them face-to-face and hearing about what God is accomplishing through them.
- 9.** that as missionaries share their experiences, the listeners would consider serving as a missionary themselves — in a short-term, long-term or career capacity.
- 10.** for the families of visiting missionaries, that they would enjoy their time together and mutually encourage one another.
- 11.** for God to comfort and sustain the missionaries who are not able to see family and friends in the United States this year. May the

Holy Spirit comfort them with His presence and assurance of God's calling to serve far from home.

- 12.** that missionaries would have an easy transition back to life in the United States — even for a short time during home service — with minimal effects of reverse culture shock.
- 13.** that the Lord would raise up supporters for missionaries who are struggling to finding the resources necessary for their ministry.
- 14.** with thanksgiving for the many forms of support and the joys the Lord provides to missionary families as they serve Him.
- 15.** that the conversations started during home service would continue long after the missionary has returned to the mission field. Pray that through ongoing communication, missionaries and supporters would encourage one another.

PHOTO: LCMS COMMUNICATIONS/ERN M. LUNSFORD

MAY *Pray For Us Calendar*

PARTNER CHURCHES — MAY 16-31

The LCMS has 88 partner churches around the world. A partner church is a church body with which the LCMS has full altar and pulpit fellowship. Many LCMS partner churches also are members of the International Lutheran Council, a worldwide association of confessional Lutheran church bodies. Some LCMS partner churches came into existence through LCMS-supported mission efforts, while others have historic roots that pre-date the LCMS or that are sourced in the mission efforts of other Lutheran church bodies.

Remember God's work in His Church as you pray:

16. *for all LCMS partner churches, some of which only have a handful of congregations. Pray that they would never feel alone in their service to Christ and His Church.*

17. *for LCMS partner churches in Latin America and the Caribbean. Pray that God's Word would continue to spread throughout these countries to bring the Body of Christ together in fellowship and to be witnesses to His love.*

18. *for LCMS partner churches in Africa. Pray that God would strengthen Lutheran Christians in this region to carry out their work for His name's sake.*

19. *for LCMS partner churches in Asia, that God would guide and strengthen Lutheran Christians*

in this region, especially in areas where it is difficult or dangerous to do His work.

20. *for LCMS partner churches in Eurasia. Pray that God would continue to use His Word as a light to those in darkness and as a stronghold for the life of His Church.*

21. *with thanksgiving for all the missionaries who serve partner churches, that they would remain faithful in their tasks and be witnesses to the Gospel through acts of mercy.*

22. *for those who serve in leadership positions in LCMS partner churches around the world, as they guide, nurture and shepherd their people.*

23. *for the laypeople of LCMS partner churches around the world, that they would be fulfilled by God's Word and Sacraments.*



24. *that God would continue to raise up faithful servants for His Church in locations around the world.*

25. *for the Lutheran church bodies around the world interested in fellowship with the LCMS. Pray that God would guide the consideration process according to His will.*

26. *in thanksgiving for those who pray continually for those who serve where spreading God's Word is difficult or dangerous.*

27. *for Lutheran churches around the world that are dealing with strife between their members. Pray that the Lord would guide them to a peaceful resolution that would strengthen their witness to the community.*

28. *for the Lutheran churches in Eurasia as they seek to minister*

to the refugees in their midst. Pray for safety for both the church workers and the refugees.

29. *for all projects currently going on in LCMS partner church bodies, that each one would have the volunteers and resources necessary to carry out the work of the church as it shows mercy and provides physical and spiritual care for people around the world.*

30. *for safe travel between and within countries in each world region. Pray that pastors, missionaries, medical teams and all who travel to assist partner churches would be kept safe and healthy, that the Gospel might be proclaimed to the far corners of creation.*

31. *for all those still living in darkness, that the Gospel will be their light and life.*

Congregations and individuals are invited to copy these pages for newsletters or other distribution. Download at lcms.org/prayforus or call 888-843-5267 to request a copy.



PHOTO: LCMS COMMUNICATIONS/ERN M. LUNDQVIST

Grace Prays~~~~~2025

We continue to pray for the following:

- Wisdom for our nation's leaders.
- Strength and commitment in tending our baptismal journey.
- For the ministry of our ECP and the families it blesses.
- For our congregation's leaders, the Spirit would guide their work.
- For our congregation, each member would see that he/she is a vital element for our mission and ministry as a church.
- For the victims of the wildfires in Southern California and the safety of all the emergency responders serving and protecting them.

*For updates to Grace Prays,
please email Victoria
at
office@gracelutheranmidlandtx.org
or call the Church Office,
432.697.3221*

OUR HOMEBOUND MEMBERS

- ❖ Mike Barbian, Cimarron Place
- ❖ Charles Colgan, Ashton Medical Lodge
- ❖ Jerry Damm, Legacy Ranch
- ❖ Eleanor Dillenburg

ILL OR RECOVERING

- ✝ Bill Hartzoge had a virtual appt. with his doctor in Plano on 4/28 to plan next steps.

PRAYERS OF MOURNING

- ✝ Chuck Wolfmuehler, Thomas' dad died on 4/15.
- ✝ For the members of the Roman Catholic Church as they mourn the loss of their Pope and the uncertainty that comes until the election of a new leader.

ILL AND RECOVERING

- ✝ Matt, Gary Parsley's nephew is in ICU being treated for sepsis.
- ✝ Steve DeShaw's hip replacement surgery was successful. He went home 4/29.
- ✝ Mary Morgan's latest scan shows new or changed spots on her liver & lungs. She will start a new chemo treatment soon.

**Follow us on Facebook. Search Grace Lutheran
and you'll see our logo.**

Our Website Address is:

www.gracelutheranmidland.org



GRACE LUTHERAN CHURCH
3000 W. Golf Course Rd.
Midland, Texas 79701-2998